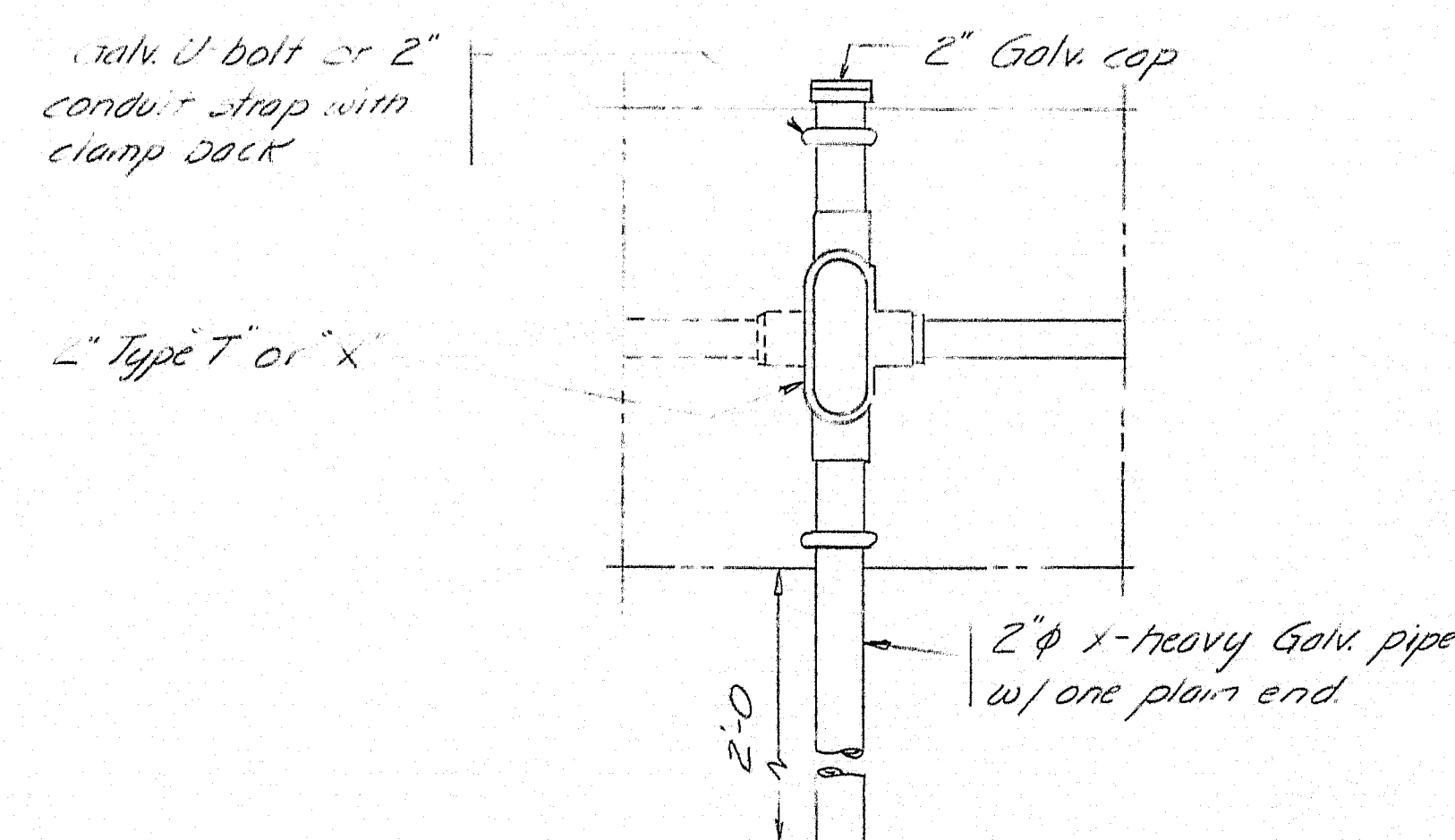
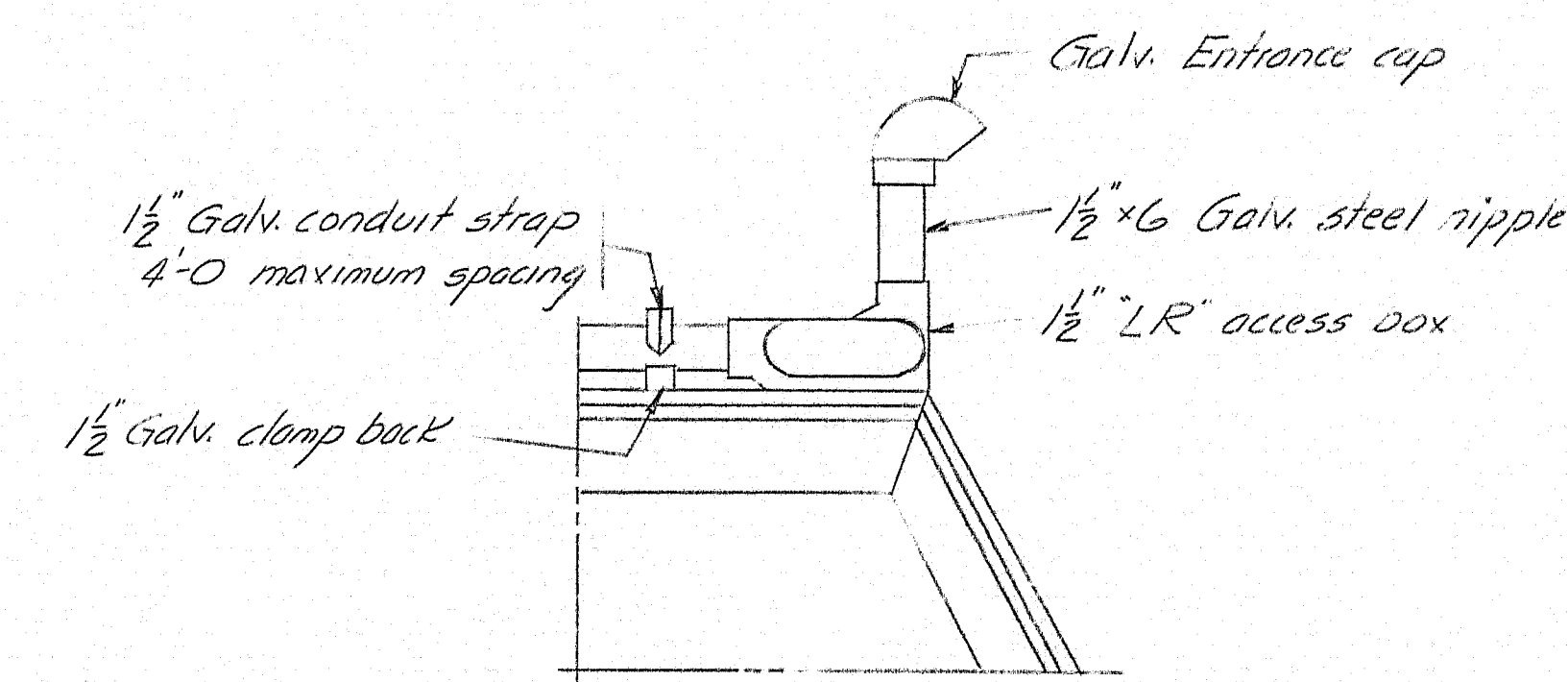


CONDUIT PLAN



LUMINAIRE BRACKET

NOTE - Locate luminaire bracket to clear laterals when luminaire is attached.



DETAIL "B"

Note

This portion of the work shall consist of furnishing and installing 1 1/2 inch galvanized steel conduit and fittings, 2 inch luminaire bracket and temporary pull wire. Luminaires and wiring will be supplied and installed by others.

DESIGN - MURRELL	BRIDGE NO. 3330
TRACE -	SURVEY -
CHECK -	PLOT -
STATE HIGHWAY COMMISSION BRIDGE DIVISION	
SOUTH BRIDGE OVER THE ANDROSCOGGIN RIVER BETWEEN THE CITIES OF AUBURN & LEWISTON ANDROSCOGGIN COUNTY LIGHTING DETAILS	
SHEET 1 OF 1	AUGUSTA, MAINE APRIL 1964

90-62

